



2023 Impact  
Report



Highland Park  
community foundation



The Highland Park Community Foundation is committed to improving the quality of life for all Highland Park and Highwood residents. Through annual grants to nonprofits that serve our community, the Foundation addresses ongoing needs and expands opportunities for all residents. We provide critical funding for programs and services that nurture children, strengthen families, assist senior adults, support individuals with disabilities, develop leadership skills and academic confidence in teens, enhance artistic experiences, and more.

We also address unexpected needs. In partnership with the City of Highland Park, immediately after the Highland Park shooting, the HPCF created the July 4th Highland Park Shooting Response Fund to accept donations that would support the needs of victims and nonprofit organizations serving the needs of impacted community members. More information about the Fund follows in this Report. When the Coronavirus outbreak struck, HPCF immediately launched a COVID-19 Emergency Response Appeal to address urgent needs of residents stemming from COVID-19.

The Highland Park Community Foundation is a lifeline that connects donors with individuals and families in need of support through our valued nonprofit grantees. We have been here for our community in the most challenging times we have ever faced and, thanks to the generosity of our donors, we will continue to be a supporting force for children and adults throughout Highland Park and Highwood.



GRANT RECIPIENT: Center for Enriched Living

I am so pleased for the continued collaboration and long-standing partnership with the Foundation in support of CEL's Programs for Individuals with Intellectual and Developmental Disabilities. Your support means the world to us, and to our members! Because of you, CEL members connect to friendship and fun through daily virtual programs they can access from home. Because of you, CEL members are finding jobs in the community and pursuing their dreams. And because of you, CEL members are now returning to the in-person programs they love.

Harriet Levy, CEO,  
Center for Enriched Living



# 2022 annual grant recipients

## education

### early childhood

Family Focus HP  
Highland Park Community Early Learning Center  
Jewish Council for Youth Services – Lutz Family Center  
Tri-Con Child Care Center



GRANT RECIPIENT: Tri-Con Child Care Center

### k-12

112 Education Foundation  
College Bound Opportunities  
Focus on the Arts  
HPHS - Estudiante to Student Mentor Program  
HPHS - Homework Club  
HPHS - National Hispanic Institute  
North Shore School District 112

### general

Highland Park Historical Society  
Highland Park Public Library  
Highwood Public Library  
Working Together

## creative & cultural arts

Bitter Jester Foundation for the Arts  
East on Central Association  
Highland Park Strings  
Midwest Young Artists Conservatory  
Music Institute of Chicago  
Pilgrim Chamber Players  
The Art Center Highland Park  
Uptown Music Theater of Highland Park

## senior services

Catholic Charities – Lake County Senior Services  
Southeast Lake County Faith in Action Volunteers

## services for individuals with disabilities

Anixter Center  
Center for Enriched Living  
Glenkirk  
Keshet  
The Stuart I Raskas Friendship Circle of Illinois



GRANT RECIPIENT: Catholic Charities

## human services

### counseling

Cancer Wellness Center  
Family Service of Lake County  
Josselyn  
The Balance Project  
Willow House

### food insecurity

Bella Ru Catering  
Blessings in a Backpack Highland Park  
Northern Illinois Food Bank  
Roberti Community House  
SaLT - Service and Learning Together, Project Shop N' Drop

### general

A Safe Place  
Big Brothers Big Sisters



GRANT RECIPIENT: Gratitude Generation

Collaborative Community Housing Initiative  
Community Partners for Affordable Housing  
Cradles to Crayons  
Curt's Café

Direct Giving Lab  
Gratitude Generation  
Infinity Foundation  
JCFS Chicago Response for Teens  
Keeping Families Covered  
Kids Rank  
Mothers Trust Foundation  
North Suburban Legal Aid Clinic  
Operation Warm  
Parks Foundation of Highland Park  
United Way of Lake County  
Youth Services  
Zacharias Sexual Abuse Center

## substance abuse & prevention

Community – The Anti-Drug Coalition  
GPF Foundation  
Highland Park After Prom  
Save a Star Drug Awareness Foundation



GRANT RECIPIENT: Midwest Young Artists

HPCF's grant enables us to continue our mission of providing early care and education to local, underserved children in need, and guarantees continued access

to our programming for children whose parents do not qualify for state tuition subsidy yet struggle daily to make ends meet. The

Foundation's funding ensures that the most vulnerable children of Highland Park and Highwood can participate in Tri-Con's program, which not only engages them in learning activities in preparation for school, but also provides them a safe and nurturing home away from home.

Pam Feinberg, Executive Director,  
Tri-Con Child Care Center

70% of our care receivers live alone with no family members within 100 miles of their home. In addition to helping with the activities of daily living, our volunteers help combat loneliness and social isolation. We are grateful for the HPCF's funding that makes it possible for volunteers to build meaningful relationships with their care receivers and see to it that special celebrations, like Inga's 100th birthday, receive the joyful recognition they deserve.

Robbie Boudreau,  
Executive Director, Southeast Lake  
County Faith in Action Volunteers



GRANT RECIPIENT: Southeast Lake County Faith in Action Volunteers

## Needs in our community

Needs in our community have increased due to economic hardship and residual impacts of the pandemic. The need for mental health services has risen dramatically since the Highland Park shooting. Requests for legal aid and housing assistance continue to rise. Food insecurity is more prevalent in our community. Seniors are isolated and need help with meals and transportation.

Working parents struggle with before- and after-school care for their children. The list goes on.

The nonprofit agencies that serve residents face their own financial struggles and continue to need our support. The Highland Park Community Foundation is a lifeline for them, filling funding gaps and providing the support they need to help Highland Park and Highwood residents.



**18%**

of Highland Park and 18% of Highwood residents 60 and over received supplemental nutrition (SNAP) benefits in the past year



**40.9%**

of the households in Highwood are cost burdened and

**42.2%**

of Highwood residents live in substandard housing conditions



**22.2%**

of students in District 112 and

**18.9%**

of HPHS students live in households where the income is below the federal poverty threshold

Statistics obtained from Lake County Health Department, IL  
Report Card 2021-2022, seniorcare.com, US Census Bureau



## July 4 Fund

We remember and honor the lives lost and those who sustained physical and non-physical injuries in the Highland Park shooting. We are grateful for the bravery of the first responders and the City's steady leadership in the days, weeks, and months after the event. Our community came together and looked out for one another in so many ways.



We were uniquely positioned, and are proud to have had the opportunity, to help our community in its time of greatest need.

In cooperation with, and with the support of, the City of Highland Park, the HPCF created the July 4th Highland Park Shooting Response Fund. The City of Highland Park publicly designated the Fund as the City's vehicle for donations, and we pledged to distribute 100% of the gifts received to victims, their families, and nonprofit organizations serving the needs of impacted residents of Highland Park, Highwood, and other local communities.

We created a committee, Together Highland Park Unidos, composed of diverse and local community leaders, to work independently of the HPCF and manage the donation distribution process. At the end of October, 100% of the funds raised, \$5.8 million, was distributed to individuals who were physically injured and organizations that supported victims and impacted community members.



Of the total, 90% (\$5,225,102) was provided to individuals who were physically injured and families of the deceased; 10% (\$580,025) went to supporting organizations.

Upon closing the Fund, the HPCF opened the July 4th Recovery Fund to address continuing mental health needs and other services resulting from the shooting. The trauma and impact of

this day will continue to be felt by our community, and our commitment of support is ongoing and unwavering. Donations to the Recovery Fund will be used exclusively for grants to organizations that are addressing victims' ongoing needs.

For more information or to read the Committee's Final Report, which includes an Honor Roll of Donors, visit [July4Fund.org](https://July4Fund.org).



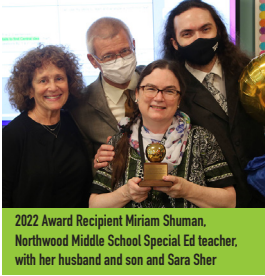
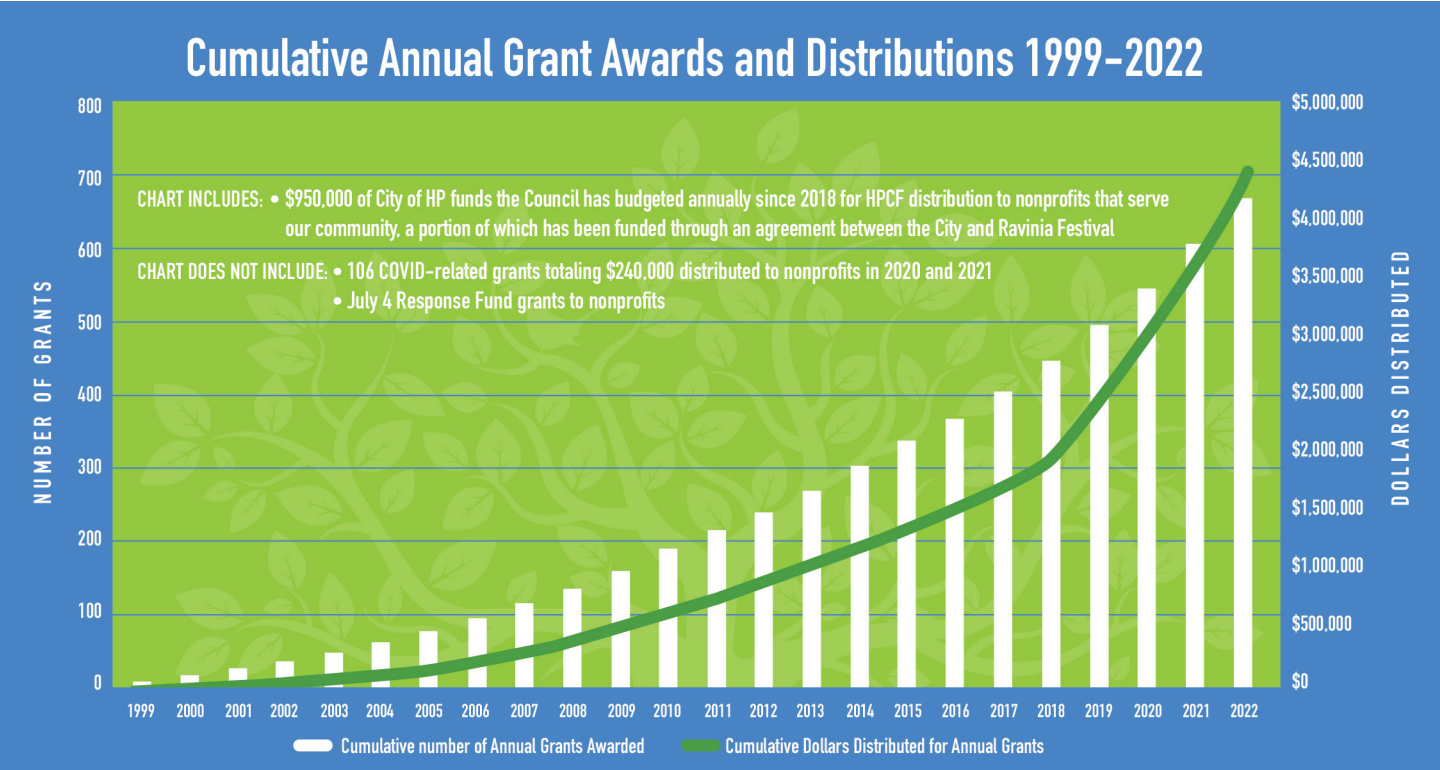
Artwork by Cheryl Steiger, HP resident and teacher at The Art Center Highland Park

The Highland Park Community Foundation has proven itself to be a trusted local resource which has been a valued partner and effective administrator of grant-making funds. We know they will distribute the funds in a fair, transparent, and straightforward process that will focus on the needs of victims, their families, and our community.

Mayor Nancy Rotering,  
July 2022

Since our founding, through our Annual and Emergency Grants, we have infused over \$4.5 million of funding into the Highland Park-Highwood community to address residents’ needs. Our annual grantmaking to nonprofits has increased from an initial

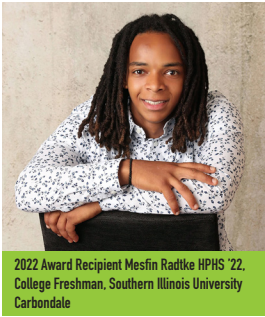
distribution in 1999 of 15 grants, totaling \$15,000, to a distribution in 2022 of 63 grants, totaling \$746,925. These grants have provided life-changing opportunities for Highland Park and Highwood residents of all ages and abilities.



### Highland Park Community Foundation Golden Apple

We believe that excellence in teaching helps young people reach their full potential. Each year, the HPCF honors one outstanding educator in the Highland Park-Highwood public schools with the HPCF Golden Apple Award.

*Exceptional teachers are guiding the next generation of Highland Park and Highwood citizens. Through our recognition of outstanding teachers, the HPCF celebrates the profound impact exemplary teaching has on the children in our community.* – **Sara Sher**, HPCF Golden Apple Committee Chair



### Personal Achievement Award

This award honors a student who demonstrates perseverance toward personal goals when faced with obstacles or other challenges, acknowledging the student’s growth during high school as opposed to the attainment of a specific level of achievement or status.

*Thank you again for investing in my college education with the HPCF scholarship. I want to share how things went for me during my first semester at SIU. I am happy to share that I got all A's and was on the dean's list. It wasn't always easy and I continue to be excited by the automotive program. Happy new year and thanks again.* – **Mesfin Radtke**



### Jack Blane Community Service Award

Jack was a successful businessman, humanitarian, Rotarian, and City Councilman. He was a trailblazer and true champion of our community. Each year, this award is presented to someone who exhibits many of Jack’s outstanding qualities and has demonstrated an exceptional level of community service.

*For 30 years, the Foundation has been helping residents and providing a safety net for the community. From young children to seniors, and everyone in between, we support organizations that address critical needs. We also add to the vibrancy of our city, by supporting music and the arts for everyone. It's one of the reasons Highland Park is a great place to live – and one of the reasons I love being involved!* – **Nancy Mills**

# Corporate Champions

## HIGHLAND PARK COMMUNITY FOUNDATION


When businesses champion the HPCF, they help community members overcome adverse circumstances, provide opportunities for underserved members of Highland Park and Highwood, and change the lives of residents. Their multi-year commitments provide critical resources for the work we do each year.


We welcome our newest Corporate Champions: **Kovitz** Silver Level, **Gregory Auto Group** Bronze Level, **Porsche Exchange** Bronze Level, and **Shellé Jewelers** Bronze Level. Gratefully, we also acknowledge all our Corporate Champions:




**Mesirow**  
**Sunset Foods**  
**First Bank of Highland Park**  
**Kovitz**  
**Autohaus on Edens**  
**Banner Kitchen and Bath**  
**Gregory Auto Group**  
**Highland Park Bank & Trust**  
**Mariani Landscape**  
**Porsche Exchange**  
**Shellé Jewelers**

Please contact us to add your business as a Corporate Champion!

**Mesirow**  We are pleased to be partnering with the Highland Park Community Foundation in a long-term investment to support and enrich the lives of those in and around Highland Park and Highwood.  
- **Richard Price**, Executive Chairman, Mesirow Financial

**SUNSET**  **FOODS** We are committed to helping local organizations that are dedicated to improving the quality of living in Highland Park and Highwood. From its inception, Highland Park Community Foundation and Sunset Foods have worked together to sustain and foster this important and worthwhile mission.  
- **John Cortesi**, President, Sunset Foods

**First Bank of Highland Park**  A Division of First Bank Chicago Our philanthropic mission aligns directly with the work of the HPCF. This partnership helps us make a greater impact on those in need throughout Highland Park and Highwood.  
- **Eric Ephraim**, CEO and President, First Bank of Highland Park



**KOVITZ**  At Kovitz, we believe the value of investing in the community and aiding those in need is of the utmost importance. The Highland Park Community Foundation exemplifies those values, and we couldn't be more excited to partner with them and bring support to those in need.  
- **Mitch Kovitz**, Principal and Founder, Kovitz



The work the Foundation has been doing over the last couple of years has been unbelievable. We are very proud of our relationship with the Foundation!!  
- **Michael Rosengarden**, President, Autohaus on Edens



We are proud to partner with a charitable organization that shares our commitment to better the lives of individuals in need. Banner's mission to support the communities we serve continues to be the one of the building blocks of our business.  
- **Gene Hara**, Co-partner, Banner Kitchen & Bath



Chicago Autotrader Association President David Sloan; Gregory Auto Group President Gregory Mauro alongside representatives from Gregory Hyundai Genesis; HPCF Executive Director Terri Olian; and Highland Park Councilmember Annette Lidawer.

**Gregory AutoGroup**  Being a Corporate Champion for the Highland Park Community Foundation is a true honor for the Gregory Auto Group. After serving the community for 40 years, this step highlights our steadfast commitment not only to providing exceptional service to our customers, but also to giving back and making a positive impact in the community we are proud to call home.  
- **Gregory Mauro**, President, Gregory Auto Group

**HIGHLAND PARK BANK & TRUST**  
A WINTRUST COMMUNITY BANK

Highland Park Bank & Trust is deeply committed to supporting organizations that positively impact the communities we serve. The impact that the HPCF has via its funding is extraordinary. We are so pleased to partner with such an amazing organization.  
- **Jon A. Levey**, President, Highland Park Bank & Trust, a Wintrust Community Bank



We are more committed to the Highland Park community than ever and will continue to support it in every way we can—through our work in the Design Studio, around town caring for our clients' properties, and our commitment to this organization, we're here to help make HP Strong.  
- **Frank Mariani**, Chairman, Mariani Landscape



**PORSCHE EXCHANGE**  The Porsche Exchange and Audi Exchange were founded in Highland Park over 40 years ago. It's been a pleasure to become a part of this community and to have so many residents as our clients. As a family-owned business, we've strived to treat each and every customer like a member of our own family. We've seen the team at the Highland Park Community Foundation also treating others like their own family by supporting the needs of so many Highland Park and Highwood residents. It's a truly worthy cause and one that everyone here at The Exchange is proud to support.  
- **Bruce Semersky**, Vice-President, The Exchange Auto Group



Shellé Jewelers Team Members Liz Nazario, Peg Keane, Manny Millman, Brian Millman, Abra Berkley, and Pattanan Chaijenkit

For more than 70 years, Shellé Jewelers has been committed to giving back. Now, as a Corporate Champion with a long-term investment to support and enrich the lives of those in and around Highland Park and Highwood, we directly align our philanthropic mission with the Highland Park Community Foundation.  
- **Brian Millman**, grandson of founder Sheldon Millman and President, Shellé Jewelers



## \$100,000+

Anonymous  
Nancy and Andy Mills \* #

## \$25,000 - \$50,000

Wendy and Jim Abrams  
Mills Family Charitable  
Foundation \*  
Linda and Richard Price Family \*

## \$15,000 - \$24,999

Anonymous  
Anonymous Foundation  
The Blane Foundation  
Mesirow \*  
Sunset Foods \*

## \$10,000 - \$14,999

Allstate Foundation  
Anonymous Foundation  
Nancy and Joel Barnett  
Binny's Beverage Depot \*  
Betsy and David Brint \* #  
The Cretors Family Foundation  
Elevate Creative \*  
First Bank of Highland Park \*  
Hecktmann Family Foundation  
Klaff Family Foundation  
Cookie and Henry Kohn \*  
Kovitz \*  
Patricia and Ken Pell \*  
Cari and Michael J. Sacks \*  
Roslyn "Ronnie" and  
Alan Schwartz \* #

Karyn and Bill Silverstein  
Bhaskaran Swaminathan \*

## \$5,000 - \$9,999

Autohaus on Edens \*  
Christine and John Bakalar  
Banner Kitchen & Bath \*  
Bartlett Wealth Management \*  
Shoshanna Bernstein  
Linda Blumberg  
Beth and Bruce Boyd \*  
Elrod Friedman LLP \*  
Frank and Dolores Corbett  
Charitable Fund  
Bryna and Edward Gamson  
Highland Park Bank & Trust \*  
Anne Kaplan \*  
Katten #  
Nancy and Ted Koenig  
Kovler Family Foundation  
Latham & Watkins LLP  
Lauri S. Bauer Foundation  
for Sudden Loss  
Monette and Craig Leva \*  
Levenfeld Pearlstein, LLC \*  
Jon A. Levey \*  
Mariani Landscape \*  
Mazzetta Company, LLC \*  
Tamara and Edward Polen  
Porsche Exchange \*  
Karen and Rich Reisin \*  
Ellen and Ron Saslow  
Shellé Jewelers \*  
Amy and Andy Small \*  
WeeBee and Bruce Sperling  
Lori and Andrés Tapia  
Sallyan Windt \*  
Zivin Family Foundation

## \$2,500 - \$4,999

Abbott Laboratories  
Susan and William Abrams \*  
Anonymous  
Ali and Sam Barnett \*  
Gail and Andy Brown  
Charles and M.R. Shapiro  
Foundation, Inc. \*  
Deborah and Michael Cogan \*  
Kim and Eric Ephraim \*  
Bonnie and Peter Flanzer \*  
Kari Guhl and Larry Gerber  
Carol and Peter Goldman  
Roberta and Robert Goldman  
Gonzalez Mota Family  
Highland Park Neighbors  
Magazine/Mike Stark \*  
Bobbie and Rick Hinden \*  
Binita Kwankin and  
Joe Hmieleski  
Sally Schwartz and  
Louie Hondros \*  
Amy and David Israel \*  
Mary Moreland and Dan Jenks  
Heidi and Jim Kirsch  
Susan and David Kreisman \*  
Laurie and Robert Levin \*  
Little Tommy's Plumbing Shop \*  
Jean and Stanley Meadows \*  
Jamie Strait Muller and  
Mark Muller \*  
North Star Investment  
Management  
North Shore Compassionate  
Care \*  
Yvonne and Bill Ornt  
Judy Perlman \*  
PwC #

Kim and David Reich \*  
Richman-Zalkind Family  
Foundation  
Virginia (Ginny) Schulte \*  
Sumner Silver  
Linda and Donald Stewart \*  
Leslye and Brian Whittman  
Nicki and Jim Woldenberg \*

## \$1,000 - \$2,499

@properties/Ted Pickus \*  
Sofia and Pablo Alvarez  
ALX Salon \*  
AmFam  
Andy and Richard Amend \*  
Anonymous (2)(1\*)  
Susie and Jim Axelrad \*  
Charlene and Robert Baizer  
Baxter International Foundation  
Baxter Healthcare Corporation  
Becker Architects \*  
Sarah and Steven Blanck  
Sue and Tony Blumberg \*  
Deborah and Ed Brill \*  
Marla and Steve Brown  
Nikki and David Brown  
Barb Brown  
Loren Brown  
Burton W. Ruder Family  
Foundation  
CME Group  
Shari and Mark Coe \*  
Jane Colman  
Jill and Tim Cuniff \*  
Candice and Robert Dalrymple  
Denise Frisch Davis Foundation  
The Dolores Kohl Education  
Foundation

\* includes a payment toward  
a multi-year pledge

Jen and Larry Elbaum  
Kathy and Ron Emanuel \*  
DM Ephraim Family Foundation  
Joan and Bob Feitler  
Fox Swibel Levin & Carroll LLP \*  
Jan and Jack Frigo \*  
Fulton Developers \*  
Paulina Garcia  
Susan Garrett  
Gearhead Outfitters  
Wendy Shorr and Stuart  
Gelfman  
Ellen Greengoss  
Nancy and Sam Guren  
Guy Scopelliti Landscape Inc. \*  
Janice and Steve Hefter \*  
Jill and Douglas A. Hirsh \*  
Joanie and Josh Holleb  
IC Signs & Graphics \*  
Katie and Grady Irey  
Ronna Brown and  
Robert Jackson  
Jasculca Terman Strategic  
Communications \*  
Susan and Wallace Roberts Jr.  
Cindy and Jim Robinson  
Robert Rosenfeld  
Yumi and Doug Ross  
Gail and Saul Rudo \*  
Cathy and Joel Schneider \*  
Robyn and Jonathon  
Schuster \*  
Scott Byron & Co. \*  
Cheryl, John, and Jane Seder \*  
Randy and Nate Shapiro  
Steven Shapiro  
Ilene Shaw  
Sara and Michael Sher  
Cristina and Bennett Lasko #

# Gather for Good Sponsor

Betsy and Scott Lassar \*  
Marsha and Steven Levin  
Laura and Mark Lieberman  
Lipschultz, Levin & Gray, LLC \*  
Anne Livingston \*  
Elsie and Henry Loeb  
Jodi and Paul Loeb  
Shirley and Michael J. Madigan  
Sheriann and Dave Mancini \*  
Roberta and George Mann  
Mead Family  
Menoni & Mocogni \*  
Morgante Wilson Architects \*  
Robin and David Nankin \*  
Lori and Jeff Nathan  
Wendy and Wally Nathan \*  
North Shore Shell - Highland  
Park #

Mimi Lutwak and Alan Pollack \*  
Port Clinton Associates  
Hannah Higgins and  
Joe Reinstein  
RMB Capital \*  
Susan and Wallace Roberts Jr.  
Cindy and Jim Robinson  
Robert Rosenfeld  
Yumi and Doug Ross  
Gail and Saul Rudo \*  
Cathy and Joel Schneider \*  
Robyn and Jonathon  
Schuster \*  
Scott Byron & Co. \*  
Cheryl, John, and Jane Seder \*  
Randy and Nate Shapiro  
Steven Shapiro  
Ilene Shaw  
Sara and Michael Sher  
Susie Sigel #

Sandy and Chuck Sonneborn  
Mindy and Jay Sterns \*  
Jane and Michael Strauss \*  
Stretchwerks \*  
Merle and Jim Styer  
Janet and Walter Swartz  
Swiss Fine Timing  
Nancy and Marc Taxman  
Trillium Foundation  
Beth and Nate Tross  
Tucker Development \*  
Kelly and John Whittenbarger  
Wipfli LLP \*  
Cindy and Scott Witten  
Cindy Wolfson \*  
Lisa and Richard Worsek  
Jeffrey Zivin

## \$500 - \$999

Kathleen and Stuart Barnett  
Brenda and Marty Becker  
Sue and Chuck Bergen  
Joan and David Bergman  
Susie and Ira Berk  
Susan and Ron Bernstein  
Gail and Brian Boorstein  
Barbara and Ron Borden  
Ellen and Laurence Bronska  
Maureen and Scott Byron  
Caroline Chiacarelli  
CJBS, LLC  
Merle and Larry Cohen  
Cheryl and Carey Cooper  
Alison and Steve Dry  
Judy and Stephen Ehrlichman

Nancy Grossman and  
Ken Fishbain  
Susan and Jim Florsheim  
Muriel and Ronald Goldberg  
Goldman Sachs  
Annie and Jim Goodman  
Geri and David Greenberg  
Ellen and Lee Gussin  
Seunghee Ha and David Youn  
Lynn and Jim Harris  
Amy and Josh Hausman  
Louise Holland  
Lucy and Jim Hospodarsky  
Idlewood Electric Supply  
Insoft Family  
James Gordon Foundation  
Susan and Jonathan Kaden  
Caryn and Harlan Kahn  
Lisie and Jeff Kuchar  
Caryl G. Lasko  
Kerri and Mark Lehmann  
Riva and David Lipman  
Michael Lippitz  
Terri and Michael Lipsitz  
Joan Zahnle and Rich Basofin  
Karla and Roland Livney  
Karyn Lutz  
Anne and Mitch Macknin  
Rabbi Steven and Patty Mason  
Sara Mesirow  
Bob Morgan  
Kate and William Morrison  
Sheila and Bill Moss  
Terri and Rob Olian

Pasquesi Plumbing  
Robin and Jonathan Plotkin  
Lynn and Robert Razowsky  
Caryn Summer and  
Bradley Reiff  
Michael Rosengarden  
Judy and Warner Rosenthal  
Mally Rutkoff  
Susan and Lee Smolen  
James Stone  
Stone Capital Group/Donna  
and Tom Stone  
Peggy and Jim Swartzchild, Jr.  
Nadine and Richard  
Woldenberg  
Amy Zisook and David Rosen  
Lois and Edmond Zisook

## \$250 - \$499

Ruth and Chuck Adler  
Anonymous  
Janice and Jeff Aronoff  
Elise and Peter Barack  
Clarissa Barrera  
Joan Zahnle and Rich Basofin  
Anne Flanigan Bassi and  
Vic Bassi  
Carolyn and Tim Bennett  
Janna and Keith Berk  
Joanne and Robert Bernstein  
Laurie Bischel  
John Blane  
Lisa and Paul Blumberg  
Joanne Brooks

Kevin Brown  
Merle and Michael Cahan  
Lynda and Scott Canel  
Stacie and Bob Chukerman  
Lisa and Barry Cohen  
Shari and Stephen Cohen  
Rhonda Cohen  
Margie and Vince Conroy  
Jamie Davidson  
Jacob, Zach & Hudson Drescher  
Nicole and Dan Drexler  
Wendy and Geoff Ellis  
Erica and Brad Emanuel  
Caryn and Andrew Engle  
Carol and Michael Erde  
Terri and Avram Feldman  
Laurie Regenbogen and  
Bruce Fleisher  
Michelle Gittler and Lee Francis  
Mandi and Paul Frank  
Janet Freed  
Karen and Seth Frey  
Stephanie and Tom Garrity  
Wendy and Bill Gimbel  
GitHub  
Nancy and Alan Goldberg  
Cheryl and Ken Goldberg  
Janice and Joel Goldblatt  
Julie and Richard Gordon  
James Gottlieb  
Patsy and Bud Greene  
Carol and Alan Greene  
Amy and Bob Greenebaum  
Ida Greenfield



Nancy Gupta  
Debbie and Steve Hara  
Highland Park Ford Lincoln  
Blanche and Richie Holleb  
Marlow Hunter  
Janey and Bob Jakubowich  
Christy and Jeff Jones  
Ashley and Mike Kelly  
Steven Kerch  
Judy and Mort Kessel  
Samantha and Andy Kessel  
Alyssa and Jeremy Knobel  
Olivia Schultz and  
Lawrence Kogos  
Elizabeth Smiley and  
Henry Kohn  
Susan and Andrew Kramer  
Jill Weinberg and  
Bernard Kramer  
Peggy Kreisman  
Pat and Richard Lee  
Jeannie and Tom Levy  
Patricia Livingston  
Mercedes Lopez-Mjaanes  
and Jeffrey Mjaanes  
Steven Lowenstein  
Sandra and Robert Lund  
Riv and James Lynch  
Hillary and Jason Manaster  
Marcy and Robert Meltzer  
Amy and Ricky Michelon  
Diane and Jim Moore  
Olivia and Srgian Paitich  
Julia Fiske and James Parker

Jane Bilger and Andrew  
Phillipsborn  
Beth and Ted Pickus  
Rhoda Pierce  
Pretzel & Stouffer  
Suzie and Ronald Raskin  
Rita Ratskoff  
Nancy and Sandy Richman  
Maribeth Roberti  
Kathy and David Robin  
Linda and Harold Rosenson  
Mike Rosenzweig  
Peggy and Jon Rubenstein  
Deborah and Scott Rudin  
Julie and Ken Sacks  
Ruth Sang  
Teddi and John Scholz  
Lili and Joe Schwartz  
Kathy and Thomas Shafer  
Bonnie Shlensky  
Debbie and Paul Smith  
Kathy and Ronald Sonenthal  
Nancy Spiesman  
Margo and Joel Spitz  
Style Shack  
Gail and Jerome Taxy  
Liz and Ian Turnipseed  
Shari and Craig Weil  
Jody and Dean Weinberg  
Elaine and Brian Weinberg  
Janet and David Wigodner  
Deborah and Adam Winick  
Barbara Winokur  
Allan Wulfstat

Randi and Darren Zeidel  
Sue Fieldman and Ed Zifkin  
Deborah and Burton Zirin  
Jennifer and Eric Zoberman  
  
**\$100 - \$249**  
Sarah and Matt Adess  
Tammi Adkins  
Marjorie and Josh Alpert  
Leslie and Jay Alter  
Lesley and James Anixter  
Anonymous (4)  
Merle and Michael Arenson  
Candace and Daniel Arnold  
Judy and Tom Aronson  
David Ascher  
Jason Attermann  
Haley and Steve Baer  
Susan Bell  
Susan and Marc Benjamin  
Julie and Cal Bernstein  
Marjorie Biederman  
Ron Blaustein  
Abby and Larry Block  
Jen and Todd Blockinger  
Alison and Andrew Bloom  
Cindy Bloomgarden  
Mitchell Gordon Bolnick  
Margi and David Bordo  
Robbie and Jim Boudreau  
Penny Brichta  
Steven Brint  
Honey and Dan Bronson  
Bronstein Family

Carol Brusslan  
Maureen Buchholz  
Henry Budnik  
Family of Mayor Robert &  
Ruth Buhai  
Denise and Michael Caplan  
Leasha and Joel Carp  
Rebecca and Jonathan Carson  
Bonnie and Stephen Cawley  
AJ and Adam Chalom  
Lauren and Barry Cherny  
Jackie and Steve Chilow  
Jason Choi  
Felicité and Paul Clements  
Linda Muskin and John Cody  
John Cody  
Susan Shulman and  
Avery Cohen  
Marla and Mark Cohen  
Loreli Fritz Cohn and  
Steven Cohn  
Beth and Richard Conen  
Cathy and William Cora  
Kathy and Irwin Coskey  
Andy Cross  
Ruth Davis  
Nicole and Joseph DeBella  
Peter Deimel  
Kelly DeMarino  
Marcia and Kenneth Denberg  
Bertha and Jack Diamond  
Jolie and Todd Dickson  
Roberta and Mark Dietzen  
Jill and John Doherty

Doris Downing  
Suzie and Jeffrey Draluck  
Sunny DuBois-Felman  
Roberta and Richard Edelheit  
Karla and Scott Eirinberg  
Sharon and Peter Eisendrath  
Francine and David Ephraim  
Eliot Ephraim  
Etruscan Gutters & Roofing  
Rochelle and David Fairman  
Missy and Chad Feldman  
Dan Felix  
Karen and Eugene Finerman  
Deborah Finn  
Pam and Paul Fisher  
Kim Schaefer and  
Adam Fleischer  
Lisa and Michael Foreman  
Alexa and Jay Forman  
Mara Feldman-Fox and  
Stuart Fox  
Debbie and Charles Frank  
Frazier Family  
Stacy and Joel Friedland  
Elise and Ira Frost  
Lynn and Mike Froy  
Steven and Michelle Furlan  
Ann and Marc Gaines  
Julie and Mark Gerstein  
John Giacobbe  
Sarah and Erik Gimbel  
Anne and Albert Girod  
Laura and Michael Gold  
Anita and Robert Goldberg

Lauren Goldenberg-Newton  
Judith Goldman  
Ellen Goldsher  
Dana and Lee Gordon  
Gordon Family  
Sallie and Alan Gratch  
Donna and Jack Greenberg  
Nonie Greene  
Nancy Greenebaum  
Marla and Terry Grossberg  
Susan Haimes  
Dana Harland  
Hauer Family  
Esther Hawkins  
Cindy and Richard Heineman  
Lillian Herter  
Hazel and Bud Herzog  
Lisa Hirsh  
Mari Hirsh  
Sara and Mitch Hoffman  
Julie and Ken Hoffman  
Barbara and David Hoffman  
Ila and Jim Coretti  
Lois and Elliot Israel  
Liane and Steven Joseph  
Wendy and Danny Kahn  
Renee and Gerald Kane  
Ethel Kaplan  
Ellen and Mark Kardon  
Terry and Geoffrey Kass  
Ronald Katch  
Amy and Dan Kaufman  
Adele and Ed Kaufman  
Andrea and Stanton Kawer

Brian Kearns/Haddam  
Road Advisors  
Gerry and Stephen Keen  
Mandy and Bryan Kirsch  
Adrienne and Ronald  
Kirshbaum  
Claudia and Alan Kooperman  
Beth Shapiro Kopin and  
Ben Kopin  
The Kornbergs  
Lori and Steven Korol  
Peg and Peter Koukos  
Michele and Tom Koulentes  
Vivian and Loren Kramer  
Debbie and Barry Kravitz  
Karen and Chad Kreindler  
Tracey and Robert Kritt  
Ann Wolk Krouse  
Eliezer Krumbain  
Caroline Kullberg  
Mara Kupferberg  
Jodi and David Lasky  
Carole and Ken Latimer  
Kerry and Michael Leaf  
Carol Toddy Leavitt  
Abba and Bonnie Lessing  
Cheryl Levi  
Rhoda Levine  
Robin and Bill Levy  
Karen and Craig Lewis  
Karen and Bob Libman  
Norman Libman  
Annette and Robert Lidawer  
Lincoln Park Rugby Club

Carly Linton  
Tracy and Rod Loewenthal  
Nancy and Howard London  
Damaris Lorta  
Claire and Kevin Lovell  
Rosa Machabanski and  
Arthur Bloch  
Linda and Steve Mandel  
Susan and Mathew Mandeltort  
Cathy and Tom Mandler  
Joanie Marks and Les Hoffman  
Sally and James Martin  
Ellen Marwede  
Marci Masur  
Barbara and Jeff Mazur  
Eileen and Mike McMahon  
Barbara and Mark Mehlman  
Carol and Neil Meltzer  
Bonnie and Charles Mervis  
Karen and Steven Meyer  
Phil Milsk  
Carol Mitchel  
Kate Power and Steve Mogge  
Julie and Joe Morrison  
Dayna Moser  
Davida and Rick Nelson  
Nancy Holab Nevins  
Norton's Restaurant  
Marla and Dan O'Keefe  
Sylvana and Jorge Osorio  
Evelyn Padorr  
Deena and Keith Pascal  
Arlene Levy and Michael  
Pelletier

Deborah Pergament  
Tobi and Scott Perlen  
Betty and Thomas Philipsborn  
Hilda and Jeffrey Piell  
Betsey and Dale Pinkert  
Francie and Stuart Pinkwater  
Lucille and Frank Pirri  
Pledgeling Foundation  
Mal and Mickey Poland  
Laurie and Neal Price  
Jill Goldstein and Kunal Pujara  
Elisa Quinlan  
Marni and Craig Raben  
Highland Park Class of 1957  
Melissa and Adam Reich  
Mimi Shea and Ernie Reinstein  
Gloria and Daniel Reisner  
Linda and Craig Rheingruber  
Jori Saks and Steve Rheinstrom  
Marjorie Rissman  
Marilyn and David Robbin  
Rosie and Melvin Roseman  
Jennifer and Paul Rosenblum  
Anne and Elliot Rossen  
Nancy and Rob Rotering  
Herbert Rozoff  
Rubenstein Family  
Rochelle and Earl Rubinoff  
Gerald Rudman  
Anny Rusk  
Manish Sahani  
Louise and Charles Saltzman  
Alison Salzman  
Michelle and Ralph Samuel

It is genuinely a great

pleasure to us to be able

to support the Highland

Park Community

Foundation, which

stands for all the best

things about our

community coming

together to help others.

Cristina & Bennett Lasko

Bobbi and Howard Schachter  
Julie and Robert Schlossberg  
Susan Schwartz  
Marlene and Stuart Senescu  
Melissa and Brian Septon  
Alvin Shulman  
Devra and Gregg Shutan  
Lloyd Sigman  
Bonnie and Eric Sloan  
Ginger and David Smerling  
Heidi Smith  
Julie and Rick Smith  
Marney and Bill Solomon  
Shelley Kreiter-Solow  
and Sheldon Solow  
Lauren Stone  
Ben Streicker  
Marly Subido  
Pat and Bill Terman  
Lori and Steve Tilkin  
Merle and Steven Tovian  
Lisa and Jeff Trotter  
Paula Turelli  
Julie and Fred Tye  
Ginger and Fred Uhlmann  
Brooke Voss  
Cheryl and Peter Waldstein  
Ruth Freedman and  
Daniel Wander  
Liz and Danny Weil  
Diane and Loren Weil  
Shauneen Weininger  
Adam Weiss  
Barbara and Victor Weisskopf

Charles Werner  
Kim Stone and Ken Wexler  
Debbie and Steve Wilneff  
Rick and Carol Wolfe  
Alison and Joe Yastrow  
Sue and Larry Yellen  
Deborah Zaccarine  
Limore and Yaniv Zilberman  
Lily and Harry Zoberman  
  
**Under \$100**  
Suzanne and Robert Aaron  
Vicki and Bruce Adams  
Jennifer L. Adams  
Julie Lansing Adler  
Manmeet Singh Ahluwalia  
Jennifer Anne  
Anonymous (7)  
Leslie and Greg Apter  
Terry and Jeff Arnol  
Rose Aronson  
Tricia Bakker  
Alejandra and Thomas Balicki  
Baseggio Family  
Jacqueline and Edward Bazelon  
Mary Belmonti  
Paula Berk  
Chadd Berkun  
Janice and H. Bruce Bernstein  
Stacy Berwick  
Gail Shaps and Jack Bierig  
Laura and Joey Bleiman  
Carrie and Andy Block  
Annette and Jerry Blumberg

Tom Boggs  
Bruce Bolnick  
Karly and Jackson Brinla  
Zachary Brint  
Ellen and Jonathan Brown  
Barbara Smith and Timothy  
Burroughs  
Hester Bury  
Jami and Michael Buss  
Tina and Eugene Calub  
Caroline and Jason Chess  
William Christou  
Donna Chudacoff  
Zachary Coplan  
Judy Daskal  
Karen and Allen Dennis  
Debra Dietrich  
Sarah and Stanley Dietzel  
Edna and Hadley Donenberg  
Darryl and Michael Ebner  
Joan and Barry Elman  
Equip for Equality  
Barbara Feldman  
Suzy Fink  
Lynn and James Foster  
Kim and Stuart Frankenthal  
Ruth and Mark Fromm  
Hania Fuschetto  
Alyse and Michael Gamson  
Suzie Garfield  
Anthony Giangrossi/Dynamic  
Colors Inc.  
Keri and Jeff Golding  
Leah Grant

Mindy Greenberg  
Susin Greenberg  
Wendy and Eleri Griffiths  
Rabbi Daniel Gropper  
Felicia Gross  
AbbVie Foundation  
Gail Guggenheim  
Dorothy Gutstadt  
Karen and Bruce Harris  
Marlene Harris  
Tracy Hartlieb  
Highland Park Periodontics, LLC  
Joanne and Richard Hoffman  
Michelle and Tom Holleman  
Amy Horne  
Olivia Hotle  
Margaret Howard  
Wendy Hozman  
Lizzie and Michael Innes  
Melissa Itkin  
Neon Jupiter  
Rita Kanne  
Bob Karger  
Nancy S. Karp  
Debbie and Joe Kasle  
Meredith Katz  
Nancy Kayzar  
Jane and Euan Kerr  
Paulette Kirschner  
Risa and Charles Koby  
Barbara and Mitchell Kohn  
Kolthammer Family  
Diane Kotin  
Doris Kraus

Jeannine Kuhlmann  
Jamie Lake  
Mara Lane  
Valerie Lapins  
Julie and Joe Learner  
Arlene and Jeff Levin  
Judith Levitan  
Lauren and Adam Levy  
Laurie Lieberman  
Eunice Lieberstein  
Leslie, Steve, Margo, and  
Alex Lipschultz  
Leanne Lowenthal  
Jennifer and Matthew  
Luczkowiak  
Adam MacMillan  
Nancy Mantynband  
Nancy Marder  
Carla Mason-Hover  
Benjamin Mathew  
Matter Family Office  
Karen and Mort May  
Lucy McCormack  
Stacey Meyer  
Jackie and Paul Meynen  
Marlene and Glenn Mikell  
Shirley and Jerrald Miller  
Erin and Elliot Molk and Family  
Lois Moss  
My Best Friend's Closet  
Darlene Neumann  
Paul Nymann  
Dustin O'Regan  
Sylvia Pelta

Lisa Pennington  
Anita and Vic Pildes  
Mark Pilkington  
Lindsay Platt  
Natalie Poll  
Aaron Pollard  
Debra and Richard Puccio  
Nick Pullia  
Marilyn and Fred Putz  
Deborah Rabin  
Phyllis Remer  
Dana and Greg Ring  
Jay Ritchie  
Evie and Scott Rooth  
Sheri Rosenbaum  
Nancy Joseph and David  
Rowley  
Barbara Winer and Donald  
Rubin  
Yassmeen Saleh  
Hilary and Michael Savitt  
Donald Schaumberger  
Daryl and Karl Schelly  
Lynn and Skip Schrayner  
Jeffrey Schubert  
Mark, Lisa, Jason and  
Eric Schwartz  
William Levy and Patrick  
Schwarz  
Holly Siegel and Yoram Sela  
Ilona Senin  
Michelle and Steve Serck  
Ira Shetty  
Jackie Siegel

Howard Sipe  
Robin Sohn  
Carol Sonnenschein  
Sally and Peter Spero  
Lori St. Arnaud  
Cheryl Steiger  
Shelley and Ken Stolman  
Linda Straus  
Jennifer Sussman  
Terri and Allan Sweig  
Lynn Klein Tatz  
Rachel Tatz  
Stuart Taussig  
Reenie Umansky  
Marilee Upton-Spatz & Family  
Jennifer and Glen Vanderflute  
Juan Vega  
Ruby Vitek  
Bonnie Wegner  
Adela Weinstein  
Elizabeth and Jeffrey Wellek  
Laurie and Rick Williams  
Susan Wilner  
Karen and Randall Winters  
Wise Family  
Tricia Wong/Brent Hyder/  
Salesforce  
Aaron Zimmerman  
Stacy Zinman

*We greatly appreciate all of our  
supporters' generous donations.  
If we have made an error in  
recognizing your contributions,  
please accept our apologies  
and notify us at [info@hpcfll.org](mailto:info@hpcfll.org)*



GRANT RECIPIENT: Northern Illinois Food Bank



**HPCF BOARD  
OF DIRECTORS**

**OFFICERS**

Betsy Brint\* Chair  
Laurie Levin\* Vice-Chair  
David Israel\* Treasurer  
Eric Ephraim\* Secretary

**DIRECTORS**

Sofia Alvarez  
Peter Flanzer #  
Bobbie Hinden  
Taryn Kessel  
Alyssa Knobel  
Cookie Kohn\*  
Tom Koulentes  
Julie Kraff  
Craig Leva \*  
Jon A. Levey \*  
Caroline Mead  
Jean Meadows  
Nancy Mills #  
Cristina Mota  
Jamie Strait Muller \*  
Jonathan Plotkin  
David Reich # \*  
Joe Reinstein  
Karen Reisin  
Amy Small  
Donald Stewart

**LIAISONS**

Jennifer Aiello, City of HP  
Debby Finn, HPHS  
Jim Hospodarsky,  
City of Highland  
Kevin Ryan, NSSD 112

**ADVISORY COUNCIL**

Lawrence Block #♦  
Deborah Bleich Cogan  
Richard Cortesi  
David Hoffman  
Patty Pell  
Virginia (Ginny) Schulte  
Bruce Sperling  
Sallyan Windt

**ASSOCIATE  
LEADERSHIP  
COUNCIL**

Joey Bleiman, Co-Chair  
Ashley Kelly, Co-Chair  
Taryn Kessel, Co-Chair  
Ali Barnett  
Erik Gimbel  
Lisie Kuchar  
Simon Leibovich  
Emily Nasatir  
Heather Sher  
Jeff Weil

**Executive Director**

Terri Olian

**Senior Director**

Eric Zoberman

**Program Assistant**

AJ Chalom

\* Executive Committee  
# Past Chair  
♦ Founder

Highland Park Community Foundation  
PO Box 398 • Highland Park, IL 60035  
[www.hpcf.org](http://www.hpcf.org)



COVER PHOTO GRANT RECIPIENT: The Art Center Highland Park  
BACK COVER GRANT RECIPIENT: 112 Education Foundation Robotics  
Revolution Elementary School Participants